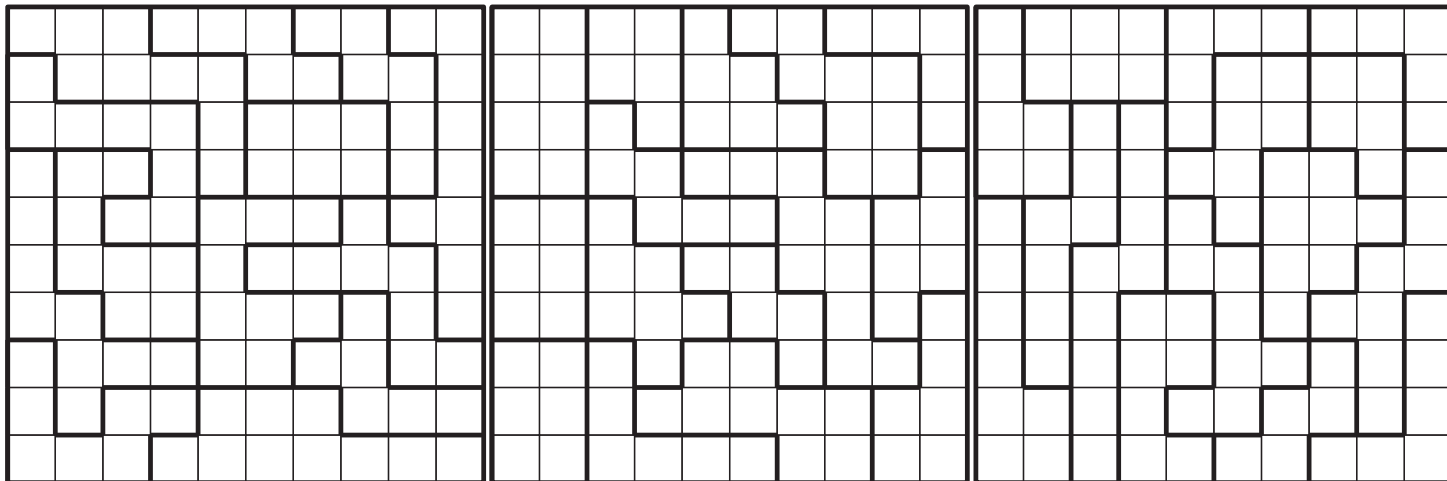
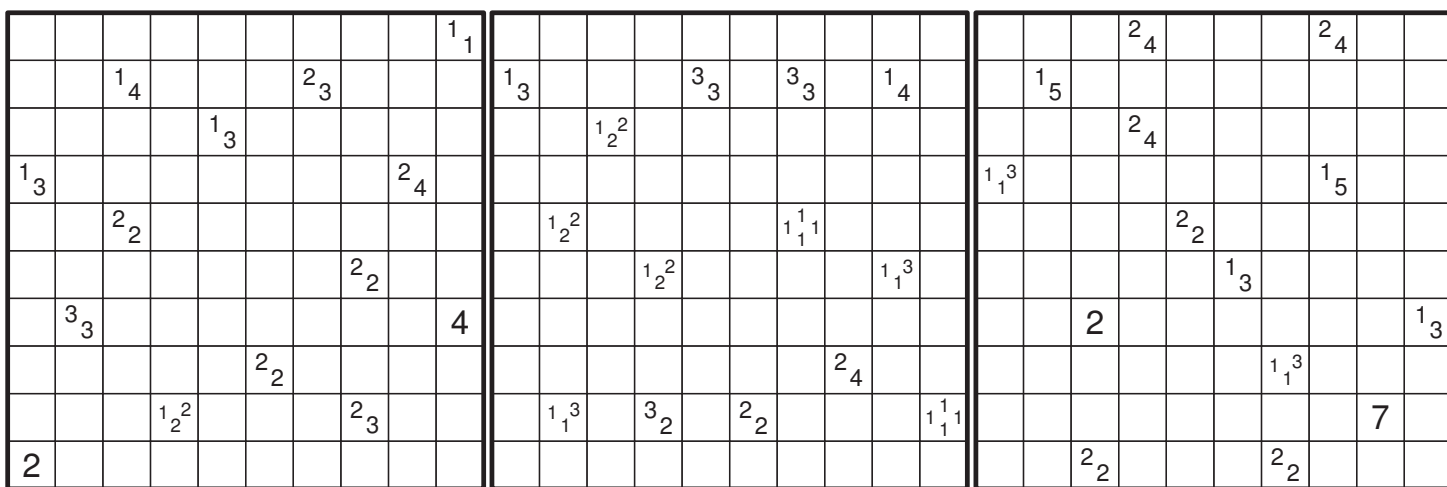


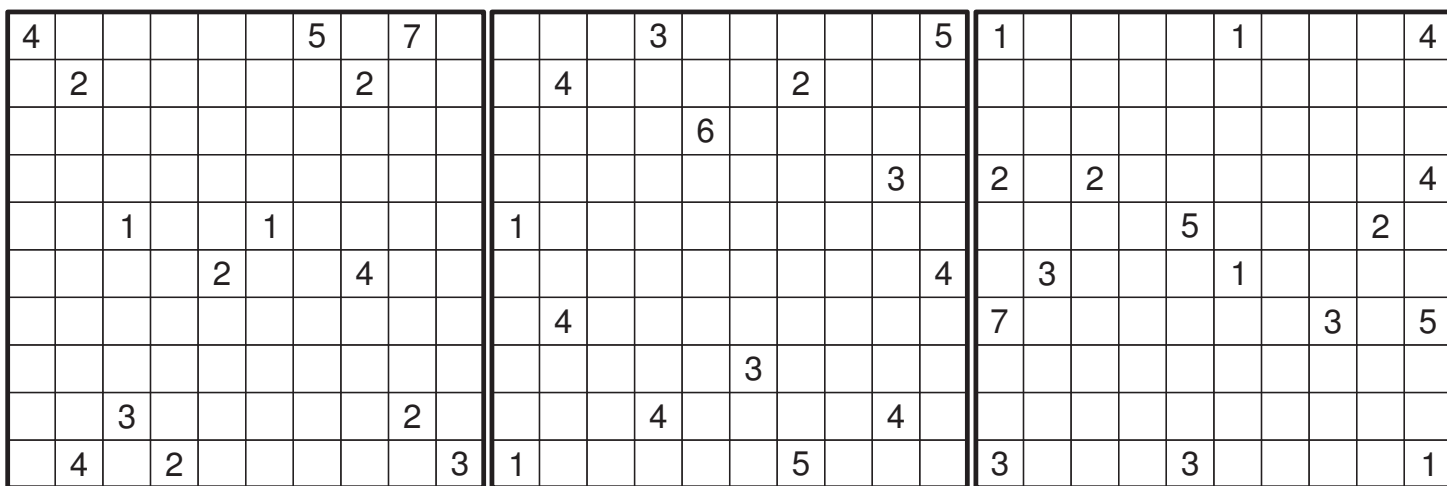
LITS



Tapa



Nurikabe



Tapa

Nurikabe

LITS

LITS

Tapa

Nurikabe

Nurikabe

LITS

Tapa

Arrange the grids in such a way that they follow the layout given in the table. Then draw a wall that's connected throughout the 9 grids following the rules for each type. The grids cannot be rotated/reflected before arrangement. Islands can go from Nurikabe grid into other grids. Tapa cells will be included in cell count if they appear in an island. In a Nurikabe grid, there can be islands without numbers only IF they touch an edge of the grid that is adjacent to another grid.